

# Farfield



Your space for wellbeing,  
connection and opportunity





## Our Journey

Farfield began with a vision – to transform the former old St Walburga’s School building on Farfield Road, Shipley, into a calm, inclusive and accessible space for the community to enjoy.

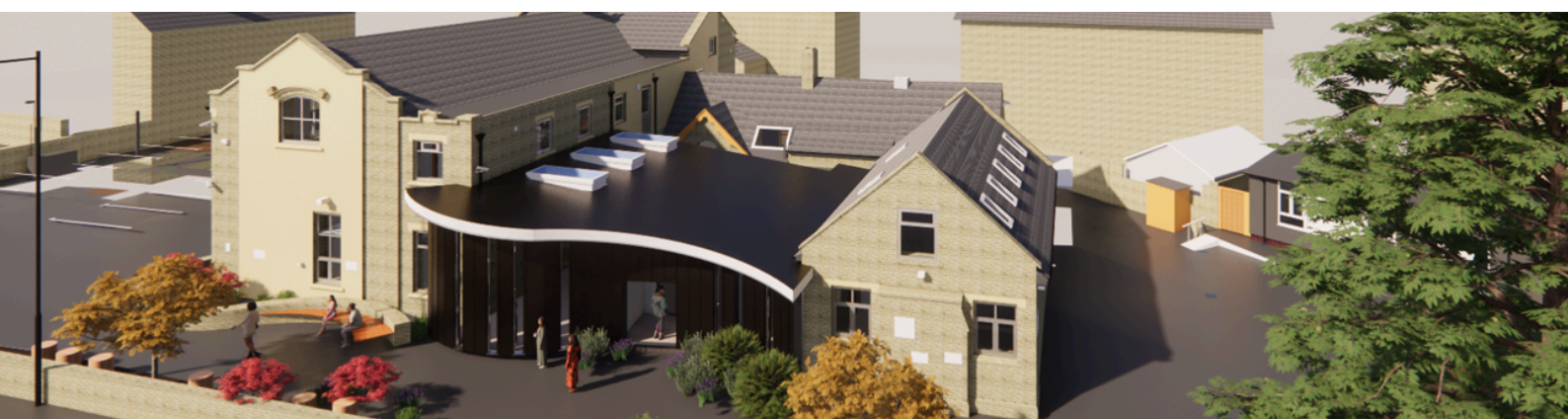
Renovations started with that dream in mind, and every decision has been guided by the needs of our community. From accessible design to eco-conscious details, we’ve worked to create an environment that supports everyone who walks through our doors.

Led by The Cellar Trust and funded by the Shipley Towns Fund, Farfield will open its doors in Summer 2025.

## A warm and welcoming space

Our goal at Farfield is to make everyone feel welcome, valued and supported.

Whether you’re seeking help, a collaborative space or a moment to unwind, you can find what you need right here.



## What we will offer

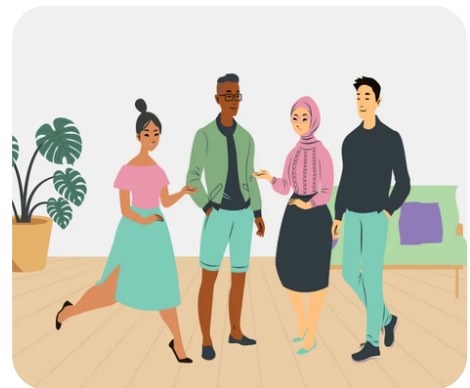
### Your space for wellbeing

With thoughtfully designed indoor and outdoor environments, every element of Farfield promotes accessibility, relaxation and personal growth.



### Your space for connection

Farfield is a space to connect, create, and relax - offering services, flexible workspaces and peaceful green areas to support community and wellbeing.



### Your space for opportunity

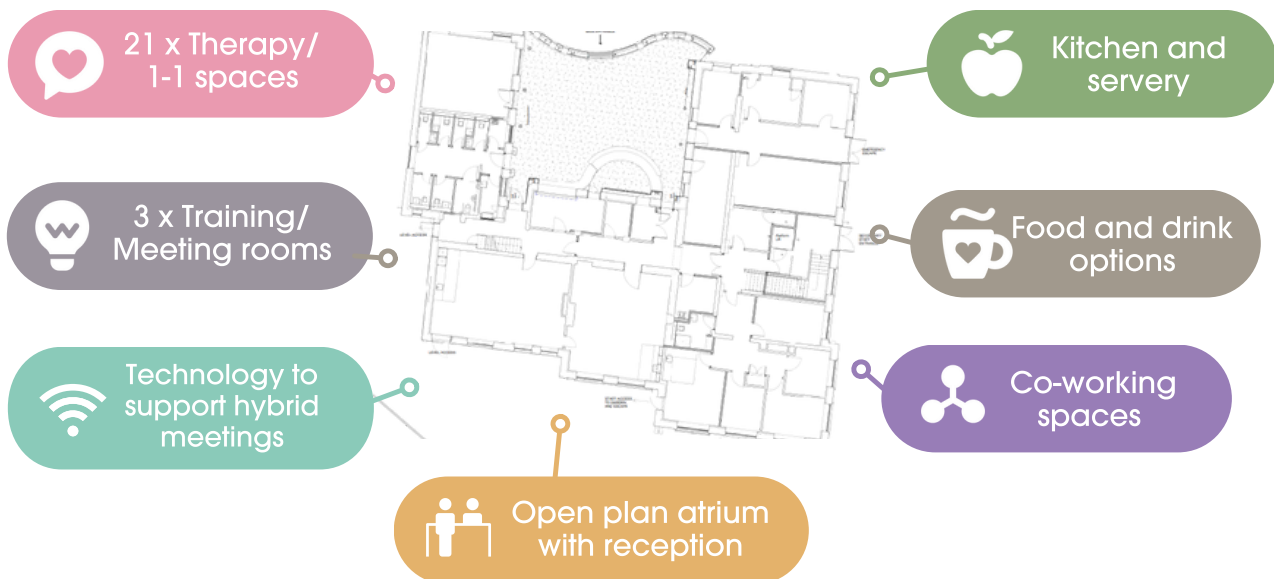
Our flexible facilities, available to book or rent, are ideal for organisations in need of dedicated spaces or community groups hosting events.



## Indoor spaces



With a fresh, calming design, versatile bookable rooms and upgraded facilities, our indoor spaces have been carefully designed to support collaboration, wellbeing and productivity for our people and partners.



- ✓ The atrium serves as a central space to welcome clients, visitors and staff, with moveable furniture for multiple uses, and a kitchen servery, which will be open to all.
- ✓ Designed with input from our client co-production and EDI group, the building offers a neutral and calming environment.
- ✓ Each 1-1 room offers a safe, calm, confidential space with variable lighting.



## Accessibility and security

Farfield will be a secure and accessible space including:



Key card entry for staff through a private entrance, which can also be used to welcome vulnerable clients.



Accessible toilets with space for wheelchair access, buggy access with baby change and inclusive, all-gender toilets.

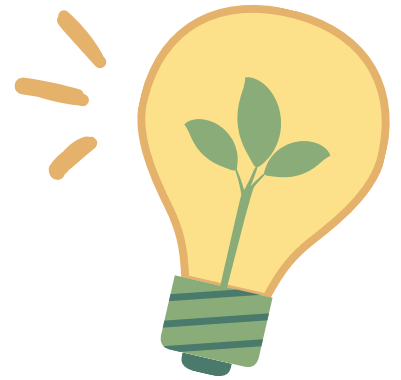


Wheelchair-accessible space throughout the site, inside and out, designated parking and a lift for first floor access.



A portable hearing loop for use around the building and high-contrast interiors for visual impairments





## Sustainability

The design of Farfield will reduce its carbon footprint through energy-efficient features including:

- ✓ Solar panelling to produce some of our energy.
- ✓ An air source heat pump will absorb heat from the environment and distribute it around the atrium.
- ✓ Motion activated corridor lighting to preserve energy.
- ✓ Recycling initiatives will ensure that Farfield becomes a model of sustainability.





## Outdoor spaces

Farfield offers peaceful outdoor spaces including:

- ✓ A Memory Garden, funded by a local business to honour a beloved colleague, with seating, benches and a pagoda.
- ✓ Accessible green spaces with smooth resin paths, a calming water feature and sensory elements.
- ✓ A pedestrian-friendly entrance, secure bike storage, EV charging points and ample parking.



## Spaces to book or rent

Farfield provides a range of flexible, bookable spaces designed to suit various needs, from private meetings to team training sessions and community events.

- ✓ Office spaces and 1-1 rooms, fully equipped with modern technology for collaboration and focused work.
- ✓ Training and meeting rooms including two large rooms for team meetings and training, plus a smaller meeting room.
- ✓ The atrium provides a flexible, welcoming space available for community events and activities.

📍 1-1 space



📍 atrium





## Our vision for Farfield

Farfield is more than a building – it's a symbol of hope and positive transformation.

Over time, our objective is to continue bringing people and organisations together to provide holistic support, amplify positive change, foster innovation and build a stronger, more connected community for everyone.

Farfield's journey has only just begun, and we warmly welcome anyone who can help us shape our vision!



**Shipley**  
Towns Fund

